



# Welding Roof Membranes

**FOCUS** | Safe Joining with Controlled Hot Air Technology



**Construction | Flat and Pitched Roofs**



# Leister Products for Plastic and Bitumen Welding in the Construction Industry

## **Leister Solutions for Roof Sealing**

If you weld waterproofing membranes on flat and pitched roofs, you need to be able to rely on the quality and reliability of your welding machines. For decades, Leister has been synonymous with reliable, durable and innovative products as well as outstanding all-round service. Worldwide.

**We know how.**

# **Content**

## **Reliable Joining of Roof Membranes**

**Page 4**

---

## **The Right Product for Every Application**

**Page 5**

---

## **Welding even with Undervoltage**

**Page 6**

---

## **Quality Assurance with LQS Roofing**

**Page 7**

---

## **Welding Machines**

**Page 10**

---

## **Hot Air Blowers**

**Page 18**

---

## **Accessories**

**Page 22**

---

# Reliable Joining of Roof Membranes

Flat roof construction continues its growth trend and meets today's performance requirements. Whether a logistics center or functional industrial roof - today, flat roofs are used to generate added value for the building owner and the environment.

## The four Requirements for a Utility Roof

- It should be permanently sealed to provide protection against external influences.
- It should be planted with vegetation to enable retention, hold water and provide relief for the storm sewer system.
- A photovoltaic system and a hot water generation system should be installed in order to generate a return.
- The vegetation is intended to create biodiversity and improve the microclimate in order to give the roof area back to nature.

Under the right conditions, flat roofs offer an excellent opportunity to transform protective roofs into utility roofs. These days, building owners no longer have to choose between photovoltaic systems and green roofs, as a combination of both is particularly beneficial.

## Safe Welding of Roof Membranes

Due to increased requirements and multiple uses, a permanently watertight flat roof is essential. This is why high-quality welding equipment is essential. The automatic welding machines VARIMAT 700 and VARIMAT 500 from Leister, launched in 2024, will exceed your expectations and inspire you. Both welding machines are equipped with the Leister Quality System (LQS), power management and Monitored Welding Assistant. The VARIMAT 700 is providing you with a GPS-supported report to document your welding.

You can weld reliably even when dealing with undervoltage of up to 20 %. And if you do leave the welding window, your VARIMAT will issue a visual and audible warning signal. Plastic welding has never been more dependable.



"Leister has everything we need. Here we can find the right welding machine for every roof application and we are delighted with the quality. We have been depending on Leister for years for reliable appliances, expert advice and perfect service."

**Ivo Mathis**  
CEO Mathis Flachdach AG

**Request a free  
expertise now**





# The Right Product for Every Application

Whether you're sealing flat or pitched roofs, Leister has the right product for every application. The overlap welding machines VARIMAT 700, VARIMAT 500 and VARIMAT 300 set new standards when it comes to roof sealing. Based on analysis and feedback from our customer base around the world, we have developed a new generation of welding machines that are even more flexible, reliable and easier to operate.

## Welding with the Correct Parameters

Leister has been working successfully for years with well-known membrane manufacturers, experts, associations and roofers. This allows us to understand your needs and continuously develop our products.

You want process security when welding all thermoplastic membranes. That's why it's always our goal to help you minimize sources of error. The solution is the Monitored Welding Assistant, which monitors your weld electronically. If modern welding machines go over or under welding parameter limits, an electronic assistant is activated and informs the user with a visual and acoustic alarm.

To set the correct welding parameters, you will find proven welding profiles in the myLeister app and in the menus of the VARIMAT 700, VARIMAT 500 and UNIROOF 700 welding machines.

## Your Benefits at a Glance

- Top-quality welding – always at the cutting edge of technology, customized to your needs and applications
- Constant welding, even when dealing with undervoltage and difficult construction site conditions thanks to controlled parameters and power management
- Quality assurance thanks to LQS Roofing (GPS welding protocol) and the Monitored Welding Assistant
- High welding speed and reliable weld width
- Welding window for determining welding parameters
- Machines with intuitive operation and large displays
- Low maintenance costs thanks to brushless motors and the use of high-quality components as well as long heating element service life
- Long spare parts guarantee and highly-skilled service
- Energy-saving Eco-Mode

## Product Overview of Flat Roof Welding Machines

Function	VARIMAT 700	VARIMAT 500	VARIMAT 300	UNIROOF 700	UNIROOF 300	UNIDRIVE 500	BITUMAT B2
Leister Quality System (LQS)	✓			✓			
Monitored Welding Assistant	✓	✓		✓			
Power management	✓	✓		✓			
Display closed loop technology	✓	✓	✓	✓	✓	✓	
Welding recipes	✓	✓		✓			
Application protection and test weld mode	✓						
Conversion kit 400 V, 230 V	✓	✓					
Pressure measurement	✓						
Working light	✓	✓					
Brushless motors	✓	✓		✓		✓	
Movable transport axel	✓	✓	✓	✓	✓		
Welding speed m/min	6-7	6-7	3-4	2-3	2-2.5	1.5-2.2	5-7
<b>Application</b>							
Large roofs (>500 m²)	✓	✓	✓				✓
Medium roofs (<500 m²)	✓	✓	✓	✓	✓	✓	✓
Small roofs (<200 m²)				✓	✓	✓	
Modified Bitumen membranes				✓	✓		✓

# Welding even with Undervoltage

Roofers struggle with undervoltage on construction sites all over the world. This is usually due to overloaded temporary construction site power supplies and faulty extension cables. Leister welding machines with power management and controlled electronics provide a solution.

## Power Management: your Advantage when Dealing with Undervoltage

If you use Leister VARIMAT 700, VARIMAT 500 and UNIROOF 700 welding machines, you will achieve the required welding temperature even with undervoltage up to a maximum of 20 %. The reason: Leister power management.

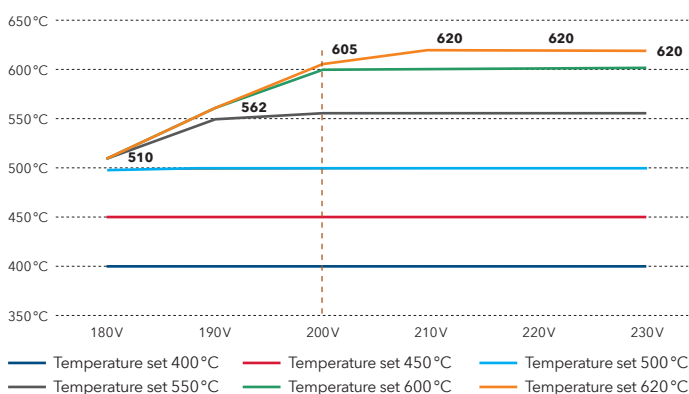
At an undervoltage of more than 20 %, the Leister automatic welders switch off automatically. This is because the set welding parameters may then no longer be maintained, which impairs the welding quality.

## The Right Extension Cables are Crucial

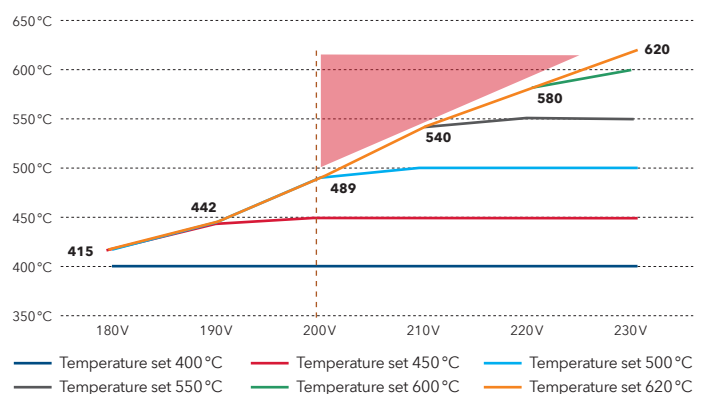
To achieve full power with your electric welding equipment, you need to use the right extension cables. Please observe the following points:

- the larger the cable cross-section, the better
- always use reliable plugs and couplings
- use high-quality extension cables
- circuit breakers should be designed for 230 V, 20 A and for 400 V, 16 A
- observe maximum cable lengths
- use a generator with at least 10 kW capacity (rule of thumb: required power x 2)
- a voltage of 400 V is advantageous for a reliable power supply

With appropriate software ("power management") and a powerful heating element, the welding machine can be operated at 230 V:



Without appropriate software ("power management") and a commercially available heating element, the welding machine can be operated at 230 V:



Thanks to Leister power management, even in the event of undervoltage you can achieve the significantly higher temperatures you need for welding PVC liners, for example.

# Quality Assurance with LQS Roofing

Thanks to the Leister Quality System, or LQS for short, you and your customers receive a welding log, supported by GPS, to check your welds, and your Monitored Welding Assistant warns you when your parameters leave the welding area.

## Increased Process Security while Welding

With LQS Roofing, you can create professional welding logs in no time to demonstrate the quality of your work.

You can find LQS Roofing for your LQS-compatible Leister devices free of charge in the myLeister app. With public projects to bid and invitations to bid from architects, a welding data log is increasingly required. LQS Roofing supports you in verifying your welding work. This gives you investment security and puts you on a solid footing for the future.



**Install the myLeister app for your new, digital experience. For iOS, Android and Windows.**



## Monitored Welding Assistant

Leister's "Monitored Welding Assistant" monitors your welding process and warns you with an alarm if your set parameters leave the welding area.

Electronic quality assurance saves and logs your welding work and offers the following benefits:

- Verification with GPS-supported welding parameters
- Automatic welding report for checking and minimizing possible errors
- Verification document of the set welding parameters
- Process security with documented weld seam length
- More control over the joining technique and prevailing electrical voltage



**Set up a consultation  
with experts**









## **Welding Machines**

VARIMAT 700	10
VARIMAT 500	11
VARIMAT 300	12
BITUMAT B2	13
UNIROOF 700	14
UNIROOF 300	15
UNIDRIVE 500	16

## **Heat Guns**

TRIAC AT	18
TRIAC ST	19
ELECTRON ST	20
HOT JET S	21

## **Accessories**

Accessories for Welding Machines	22
Accessories for Heat Guns	26
More Accessories	28

# VARIMAT 700



The VARIMAT 700 automatic welding machine offers constant process reliability and tracking accuracy for flat roof welding. High contact pressure, innovative nozzle swivel-in mechanism, LQS and power management ensure welding quality.

## Technical data

Voltage	230 V; 400 V	
Frequency	50/60 Hz	
Power	3680-5700 W	
Speed	1.0-12.0 m/min	3.28-39.37 ft/min
Temperature	100-620 °C	212.0-1148.0 °F
Air volume adjustable	Yes	
Welding nozzle / seam width	40 mm	1.57 in
Welding materials	ECB; EPDM; EVA; FPO; PIB; PO; PVC; PVC-P; TPE; TPO; TPU	
LQS	Yes	
Brushless blower motor	Yes	
Brushless drive motor	Yes	
Length	605.0 mm	23.81 in
Width	335.0 mm	13.18 in
Height	373.0 mm	14.68 in
Weight	37.5 kg	82.67 lb
Power cable length	5.0 m	16.4 ft
Approvals	CB Certification; CE; UKCA	
Protection class	I	
Country of origin	CH	

## Product items

VARIMAT 700, 230V/3680W, 40mm, w/o cable	173.180
VARIMAT 700, 400V/5700W, 40mm, CEE 5/16	173.181
VARIMAT 700, 230V/3680W, 40mm, 'F, w/o plug	174.614



**Configure  
product**

## Nozzles



176.291  
Power scraping nozzle, 40 mm, VARIMAT 700/500/300

## Machine specific accessories



172.967  
Power cable 5 m (Harting), CEE 5/16



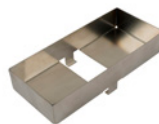
172.968  
Power cable 5 m (Harting), EU plug



174.945  
Power cable 5 m (Harting), w/o plug



174.946  
Power cable 5 m (Harting), CEE 3/16



134.005  
Accessories box VARIMAT 700/500/300



174.323  
Force sensor for additional weight detection



175.742  
Plug (Harting) 6 pin/16A

## Spare parts



148.518  
Heating element, 230V/4400W



148.521  
Heating element, 400V/5500W

All accessories can be found from page 22.

# VARIMAT 500



The VARIMAT 500 automatic welding machine offers reliability in flat roof welding. High contact pressure, innovative nozzle swivel-in mechanism and variable transport axis ensure welding quality. Convertible from 230 to 400 V.

## Technical data

Voltage	230 V; 400 V	
Frequency	50/60 Hz	
Power	3680-5700 W	
Speed	1.0-12.0 m/min	3.28-39.37 ft/min
Temperature	100-620 °C	212.0-1148.0 °F
Air volume adjustable	Yes	
Welding nozzle / seam width	40 mm	1.57 in
Welding materials	ECB; EPDM; EVA; FPO; PIB; PO; PVC; PVC-P; TPE; TPO; TPU	
LQS	No	
Brushless blower motor	Yes	
Brushless drive motor	Yes	
Length	605.0 mm	23.81 in
Width	335.0 mm	13.18 in
Height	373.0 mm	14.68 in
Weight	37.5 kg	82.67 lb
Power cable length	5.0 m	16.4 ft
Approvals	CB Certification; CE; UKCA	
Protection class	I	
Country of origin	CH	

## Product items

VARIMAT 500, 230V/3680W, 40mm, w/o cable	173.182
VARIMAT 500, 400V/5700W, 40mm, CEE 5/16	173.183
VARIMAT 500, 230V/3680W, 40mm, 'F, w/o plug	174.615

## Nozzles



176.291  
Power scraping nozzle, 40 mm, VARIMAT 700/500/300

## Machine specific accessories



172.967  
Power cable 5 m (Harting), CEE 5/16



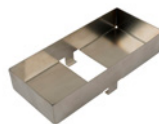
172.968  
Power cable 5 m (Harting), EU plug



174.945  
Power cable 5 m (Harting), w/o plug



174.946  
Power cable 5 m (Harting), CEE 3/16



134.005  
Accessories box VARIMAT 700/500/300



174.323  
Force sensor for additional weight detection



175.742  
Plug (Harting) 6 pin/16A

## Spare parts



148.518  
Heating element, 230V/4400W



148.521  
Heating element, 400V/5500W

All accessories can be found from page 22.



**Configure  
product**

# VARIMAT 300



The VARIMAT 300 roof welding machine enables easy and intuitive welding of flat roofs. High contact pressure, tracking accuracy and flexible transport axis for sustainable welding quality are further plus points.

## Technical data

Voltage	230 V; 400 V	
Frequency	50/60 Hz	
Power	3680-5700 W	
Speed	1.0-10.0 m/min	3.28-32.81 ft/min
Temperature	100-620 °C	212.0-1148.0 °F
Air volume adjustable	Yes	
Welding nozzle / seam width	40 mm	1.57 in
Welding materials	ECB; EPDM; EVA; FPO; PIB; PO; PVC; PVC-P; TPE; TPO; TPU	
LQS	No	
Brushless blower motor	No	
Brushless drive motor	Yes	
Length	605.0 mm	23.81 in
Width	335.0 mm	13.18 in
Height	373.0 mm	14.68 in
Weight	37.5 kg	82.67 lb
Power cable length	5.0 m	16.4 ft
Approvals	CB Certification; CE; UKCA	
Protection class	I	
Country of origin	CH	

## Product items

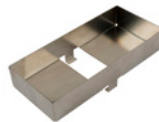
VARIMAT 300, 400V/5700W, 40mm, CEE 5/16	173.184
VARIMAT 300, 230V/3680W, 40mm, EU plug	173.185
VARIMAT 300, 230V/3680W, 40mm, CEE 3/16	173.186
VARIMAT 300, 230V/3680W, 40mm, °F, w/o plug	174.616

## Nozzles



176.291  
Power scraping nozzle, 40 mm, VARIMAT 700/500/300

## Machine specific accessories



134.005  
Accessories box VARIMAT 700/500/300



171.490  
Additional weight VARIMAT 700/500/300



173.090  
Nozzle adjustment gauge VARIMAT 700/500/300



175.074  
Rolling Transport Case VARIMAT 700/500/300

## Spare parts



148.518  
Heating element, 230V/4400W



148.521  
Heating element, 400V/5500W



**Configure  
product**

All accessories can be found from page 22.



# BITUMAT B2



The BITUMAT B2 is used to weld modified bitumen without flames. With the appropriate bitumen nozzle, precisely welded seams are easily achieved.

## Technical data

Voltage	230 V; 400 V	
Frequency	50/60 Hz	
Power	6700 W	
Speed	0.8-12.0 m/min	2.62-39.37 ft/min
Temperature	20-650 °C	68.0-1202.0 °F
Air volume adjustable	Yes	
Welding nozzle / seam width	75-100 mm	2.95-3.93 in
Welding materials	Bitumen; ECB	
LQS	No	
Brushless blower motor	No	
Brushless drive motor	No	
Length	690.0 mm	27.16 in
Width	490.0 mm	19.29 in
Height	330.0 mm	12.99 in
Weight	39.0 kg	85.98 lb
Power cable length	1.2 m	3.93 ft
Approvals	CB Certification; CE; UKCA	
Protection class	I	
Country of origin	CH	

## Product items

BITUMAT B2, 230V/6700W, 100mm, CEE 5/32	138.386
BITUMAT B2, 400V/6700W, 100mm, CEE 5/16	140.437
BITUMAT B2, 400V/6700W, 75mm, CEE 5/16	140.438
BITUMAT B2, 230V/6700W, 100mm, w/o plug	140.439
BITUMAT B2, 230V/6700W, 75mm, w/o plug	140.441



**Configure  
product**

## Nozzles



138.048  
Overlap welding nozzle 75 mm BITUMAT B2



138.047  
Overlap welding nozzle 100 mm BITUMAT B2

## Machine specific accessories



137.895  
Pressure roller 100 mm, with heel



140.229  
Pressure roller 100 mm, without heel



140.228  
Pressure roller 75 mm, without heel



156.447  
Pressure roller 80 mm



158.222  
Pressure roller 100 mm



155.328  
Bitumen kit 120 mm, BITUMAT B2

## Spare parts



126.594  
Heating element, 400V/6500W



126.386  
Heating element, 230V/6500W

All accessories can be found from page 22.

# UNIROOF 700



Thanks to LQS, Monitored-Welding-Assistant and Leister's standard nozzle, the UNIROOF 700 automatic roof welding machine is well-suited for welding flat roofs and sets a new standard in the roof industry.

## Technical data

Voltage	100 V; 120 V; 230 V	
Frequency	50/60 Hz	
Power	1500-3680 W	
Speed	1.0-10.0 m/min	3.28-32.81 ft/min
Temperature	100-620 °C	212.0-1148.0 °F
Air volume adjustable	Yes	
Welding nozzle / seam width	40-80 mm	1.57-3.14 in
Welding materials	Bitumen; ECB; EPDM; EVA; FPO; PIB; PVC; TPE; TPO; TPU	
LQS	Yes	
Brushless blower motor	Yes	
Brushless drive motor	Yes	
Length	475.0 mm	18.7 in
Width	244.0-360.0 mm	9.6-14.17 in
Height	260.0 mm	10.23 in
Weight	17.0-19.9 kg	37.47-43.87 lb
Power cable length	3.0 m	9.84 ft
Approvals	CB Certification; CE; UKCA	
Protection class	I	
Country of origin	CH	

## Product items

UNIROOF 700, 230V/3680W, 40mm, EU plug	165.834
UNIROOF 700, 120V/1800W, 40mm, US plug	165.835
UNIROOF 700, 230V/3680W, 40mm, w/o plug	165.836
UNIROOF 700, 100V/1500W, 40mm, JP plug	165.837
UNIROOF 700, 230V/3680W, 40mm, CEE 3/16	169.235
UNIROOF 700, 230V/3680W, 40mm, KR plug	169.236
UNIROOF 700, 120V/1800W, 40mm, CEE 3/16	169.237
UNIROOF 700, 230V/3680W, 80mm, EU plug	170.210
UNIROOF 700, 230V/3680W, 40mm, CH plug	176.840



**Configure  
product**

## Nozzles



170.119  
Inseam scraping nozzle, 40 mm, UNIROOF

## Machine specific accessories



173.295  
Roof profile kit, UNIROOF 700/300



137.843  
Guide bar top



173.654  
Bitumen kit 80 mm, UNIROOF 700/300



154.522  
Transport axis, 300 mm



152.706  
Transport axis 210 mm, with movable wheels



167.345  
Nozzle adjustment gauge UNIROOF 700/300

## Spare parts



145.604  
Heating element, 120V/2300W



163.951  
Heating element, 100V/2000W



169.791  
Heating element, 230V/4400W

All accessories can be found from page 22.

# UNIROOF 300



The compact UNIROOF 300 automatic welding machine is ideally suited for welding medium to large flat roofs and is ideal as an entry-level machine due to its simple operation.

## Technical data

Voltage	100 V; 120 V; 230 V	
Frequency	50/60 Hz	
Power	1500-3450 W	
Speed	1.0-10.0 m/min	3.28-32.81 ft/min
Temperature	100-600 °C	212.0-1112.0 °F
Air volume adjustable	Yes	
Welding nozzle / seam width	30-40 mm	1.18-1.57 in
Welding materials	Bitumen; ECB; EPDM; EVA; FPO; PIB; PVC; TPE; TPO; TPU	
LQS	No	
Brushless blower motor	No	
Brushless drive motor	Yes	
Length	475.0 mm	18.7 in
Width	244.0 mm	9.6 in
Height	260.0 mm	10.23 in
Weight	17.0 kg	37.47 lb
Power cable length	3.0 m	9.84 ft
Approvals	CB Certification; CE; UKCA	
Protection class	I	
Country of origin	CH	

## Product items

UNIROOF 300, 230V/3450W, 40mm, EU plug	168.634
UNIROOF 300, 120V/1800W, 40mm, US plug	168.635
UNIROOF 300, 100V/1500W, 40mm, JP plug	168.636
UNIROOF 300, 230V/3450W, 40mm, CEE 3/16	168.637
UNIROOF 300, 230V/3450W, 30mm, EU plug	168.638
UNIROOF 300, 230V/3450W, 40mm, w/o plug	168.639
UNIROOF 300, 230V/3450W, 40mm, CH plug	176.841



**Configure  
product**

## Nozzles



170.119  
Inseam scraping nozzle, 40 mm, UNIROOF

## Machine specific accessories



173.295  
Roof profile kit, UNIROOF 700/300



137.843  
Guide bar top



173.654  
Bitumen kit 80 mm, UNIROOF 700/300



154.522  
Transport axis, 300 mm



152.706  
Transport axis 210 mm, with movable wheels



167.345  
Nozzle adjustment gauge UNIROOF 700/300

## Spare parts



145.604  
Heating element, 120V/2300W



163.951  
Heating element, 100V/2000W



169.791  
Heating element, 230V/4400W

All accessories can be found from page 22.

# UNIDRIVE 500



UNIDRIVE 500 semi-automatic welding machine combines manual and automatic welding in a handy plastic welding device. Developed for small roofs, skylight welding, roof connections and small terraces.

## Technical data

Voltage	100 V; 120 V; 230 V	
Frequency	50/60 Hz	
Power	1500-2300 W	
Speed	0.7-4.5 m/min	2.29-14.76 ft/min
Temperature	100-580 °C	212.0-1076.0 °F
Air volume adjustable	Yes	
Welding nozzle / seam width	15-40 mm	0.59-1.57 in
Welding materials	ECB; EPDM; EVA; FPO; PIB; PO; PU; PVC; TPE; TPO; TPU	
LQS	No	
Display	Yes	
Brushless blower motor	Yes	
Brushless drive motor	Yes	
Reversible drive	Yes	
Length	275.0 mm	10.82 in
Width	173.0 mm	6.81 in
Height	297.0 mm	11.69 in
Weight	4.5 kg	9.92 lb
Power cable length	3.0 m	9.84 ft
Approvals	CB Certification; CE; UKCA	
Protection class	I	
Country of origin	CH	

## Product items

UNIDRIVE 500, 230V/2300W, 40mm, EU plug	163.144
UNIDRIVE 500, 230V/2300W, 40mm, CH plug	163.145
UNIDRIVE 500, 230V/2300W, 40mm, CEE 3/16	163.146
UNIDRIVE 500, 120V/1800W, 40mm, US plug	163.147
UNIDRIVE 500, 120V/1800W, 40mm, CEE 3/16	163.148
UNIDRIVE 500, 100V/1500W, 40mm, JP plug	163.149
UNIDRIVE 500, 230V/2300W, 30mm, EU plug	163.150
UNIDRIVE 500, 230V/2300W, 40mm steel rollers, CEE 3/16	163.151
UNIDRIVE 500, 230V/2300W, 15mm steel rollers, CEE 3/16	163.152

## Nozzles



164.586  
Overlap welding nozzle 15 mm



164.576  
Overlap welding nozzle 30 mm

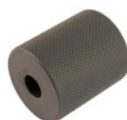


170.120  
Inseam scraping nozzle, 40 mm

## Machine specific accessories



163.930  
Pressure roller 15 mm



163.357  
Pressure roller 40 mm



162.551  
Support roller



151.847  
Cylinder brush, brass ø 15 mm

## Spare parts



145.582  
Heating element, 230V/2200W



165.176  
Heating element, 120V/2100W



165.179  
Heating element, 100V/1600W



**Configure  
product**

All accessories can be found from page 22.





# TRIAC AT



The TRIAC AT heat gun is designed to weld and mold plastic. The temperature and air quantity can be set separately by means of its e-Drive control unit.

## Technical data

Voltage	100 V; 120 V; 220 V; 230 V	
Frequency	50/60 Hz; 60 Hz	
Power	1500-1600 W	
Temperature	40-620 °C	104.0-1148.0 °F
Temperature setting stepless	Yes	
Airflow (20°C)	120-240 l/min	4.23-8.47 cfm
Stepless air volume adjustment	Yes	
Static pressure	3000 Pa	0.43 psi
Eco-Mode	Yes	
Display	Yes	
e-Drive	Yes	
Outdoor use	Yes	
Nozzle connection ø	31.5 mm / 1.25 in; M14	
Length	335.0 mm	13.18 in
Device diameter	90 mm	3.54 in
Handle diameter	56 mm	2.2 in
Weight	1.02 kg	2.24 lb
Power cable length	3.0 m	9.84 ft
Noise emission level	67 dB (A)	
Approvals	CE; KC; S+; UL	
Protection class	II	
Country of origin	CH	

## Product items

TRIAC AT, 230V/1600W, EU plug	141.314
TRIAC AT, 120V/1600W, US plug	141.316
TRIAC AT, 100V/1500W, JP plug	141.317
TRIAC AT, 120V/1600W, CEE 3/16	141.319
TRIAC AT, 230V/1600W, UK plug	141.320
TRIAC AT, 230V/1600W, AU plug	141.321
TRIAC AT, 230V/1600W, CH plug	141.322
TRIAC AT, 230V/1600W, CN plug	141.323
TRIAC AT, 230V/1600W, M14, EU plug	142.737
TRIAC AT, 220V/1600W, KR plug	148.005

## Nozzles



107.123  
Wide slot nozzle (ø 31.5) 20 x 2 mm



107.132  
Wide slot nozzle (ø 31.5) 40 x 2 mm



107.124  
Wide slot nozzle (ø 31.5) 20 x 2 mm



105.503  
Wide slot nozzle (ø 31.5) 20 x 2 mm



105.487  
Wide slot nozzle (ø 31.5) 20 x 2 mm



100.303  
Tubular nozzle (ø 31.5) ø 5 mm, 37 mm



106.991  
Speed welding nozzle (ø 8.0) Profile D ø 5



107.131  
Wide slot nozzle (ø 31.5) 80 x 2 mm

## Spare parts



142.717  
Heating element, 230V/1550W



142.718  
Heating element, 120V/1550W



**Configure  
product**

All accessories can be found from page 22.

# TRIAC ST



The TRIAC ST is a robust, universally versatile heat gun for welding plastic membranes, and shrinking and molding various thermoplastics.

## Technical data

Voltage	100 V; 120 V; 220 V; 230 V	
Frequency	50/60 Hz; 60 Hz	
Power	1500-1600 W	
Temperature	40-700 °C	104.0-1292.0 °F
Temperature setting stepless	Yes	
Airflow (20°C)	240 l/min	8.47 cfm
Stepless air volume adjustment	No	
Static pressure	3000 Pa	0.43 psi
Eco-Mode	No	
Display	No	
e-Drive	No	
Outdoor use	Yes	
Nozzle connection ø	31.5 mm / 1.25 in; M14	
Length	338.0 mm	13.3 in
Device diameter	90 mm	3.54 in
Handle diameter	56 mm	2.2 in
Weight	0.99 kg	2.18 lb
Power cable length	3.0 m	9.84 ft
Noise emission level	67 dB (A)	
Approvals	CE; KC; S+; UL	
Protection class	II	
Country of origin	CH	

## Product items

TRIAC ST, 230V/1600W, EU plug	141.227
TRIAC ST, 120V/1600W, US plug	141.228
TRIAC ST, 100V/1500W, JP plug	141.230
TRIAC ST, 120V/1600W, CEE 3/16	141.308
TRIAC ST, 230V/1600W, UK plug	141.309
TRIAC ST, 230V/1600W, AU plug	141.310
TRIAC ST, 230V/1600W, CH plug	141.311
TRIAC ST, 230V/1600W, CN plug	141.312
TRIAC ST, 230V/1600W, M14, EU plug	144.013
TRIAC ST, 220V/1600W, KR plug	153.891

## Nozzles



107.123  
Wide slot nozzle (ø 31.5) 20 x 2 mm



107.132  
Wide slot nozzle (ø 31.5) 40 x 2 mm



107.124  
Wide slot nozzle (ø 31.5) 20 x 2 mm



105.503  
Wide slot nozzle (ø 31.5) 20 x 2 mm



105.487  
Wide slot nozzle (ø 31.5) 20 x 2 mm



100.303  
Tubular nozzle (ø 31.5) ø 5 mm, 37 mm



106.991  
Speed welding nozzle (ø 8.0) Profile D ø 5



107.131  
Wide slot nozzle (ø 31.5) 80 x 2 mm

## Spare parts



142.717  
Heating element, 230V/1550W



142.718  
Heating element, 120V/1550W



**Configure  
product**

All accessories can be found from page 22.



# ELECTRON ST



With a power of 3400 Watts, the ELECTRON ST is an especially strong heat gun. Well-suited for professional welding of modified bitumen and thermoplastics with high material strength.

## Technical data

Voltage	120 V; 200 V; 220 V; 230 V	
Frequency	50/60 Hz; 60 Hz	
Power	2300-3400 W	
Temperature	40-650 °C	104.0-1202.0 °F
Temperature setting stepless	Yes	
Airflow (20°C)	360 l/min	12.71 cfm
Stepless air volume adjustment	No	
Static pressure	3400 Pa	0.49 psi
Eco-Mode	No	
Display	No	
e-Drive	No	
Outdoor use	Yes	
Nozzle connection ø	50 mm / 2 in	
Length	338.0 mm	13.3 in
Device diameter	90 mm	3.54 in
Handle diameter	56 mm	2.2 in
Weight	1.18 kg	2.6 lb
Power cable length	3.0 m	9.84 ft
Noise emission level	67 dB (A)	
Approvals	CE; KC; S+	
Protection class	II	
Country of origin	CH	

## Product items

ELECTRON ST, 120V/2400W, US plug	145.562
ELECTRON ST, 120V/2400W, CEE 3/32	145.563
ELECTRON ST, 200V/3000W, JP plug	145.564
ELECTRON ST, 230V/3400W, AU plug	145.565
ELECTRON ST, 230V/3400W, CN plug	145.566
ELECTRON ST, 230V/3400W, EU plug	145.567
ELECTRON ST, 230V/3400W, CEE 3/16	145.568
ELECTRON ST, 230V/3400W, w/o plug	145.574
ELECTRON ST, 230V/2300W, EU plug	149.673
ELECTRON ST, 220V/3400W, KR plug	154.839



**Configure  
product**

## Nozzles



107.258  
Wide slot nozzle (ø 50.0) 70 x 10 mm



107.653  
Wide slot nozzle (ø 50.0) 75 x 2 mm



107.270  
Wide slot nozzle (ø 50.0) 150 x 12 mm



142.281  
Wide slot nozzle (ø 50.0) 74 x 3 mm

## Machine specific accessories



151.068  
Stand ELECTRON ST

## Spare parts



145.606  
Heating element, 230V/3300W



145.604  
Heating element, 120V/2300W

All accessories can be found from page 22.



# HOT JET S



The HOT JET S is a particularly compact and handy heat gun. Equipped with an ergonomic handle and infinitely adjustable temperature, the HOT JET S is ideal for longer welding work.

## Technical data

Voltage	100 V; 120 V; 220 V; 230 V	
Frequency	50/60 Hz; 60 Hz	
Power	460 W	
Temperature	20-600 °C	68.0-1112.0 °F
Temperature setting stepless	Yes	
Airflow (20°C)	20-80 l/min	0.7-2.82 cfm
Stepless air volume adjustment	Yes	
Static pressure	1600 Pa	0.23 psi
Eco-Mode	No	
Display	No	
e-Drive	No	
Outdoor use	Yes	
Nozzle connection ø	21.3 mm / 0.85 in	
Length	235.0 mm	9.25 in
Device diameter	70 mm	2.75 in
Handle diameter	40 mm	1.57 in
Weight	0.36 kg	0.79 lb
Power cable length	3.0 m	9.84 ft
Noise emission level	56 dB (A)	
Approvals	CE; KC; S+; UL	
Protection class	II	
Country of origin	CH	

## Product items

HOT-JET S, 230V/460W, EU plug	100.648
HOT-JET S, 230V/460W, CH plug	100.688
HOT-JET S, 230V/460W, AU plug	100.854
HOT-JET S, 120V/460W, US plug	100.859
HOT-JET S, 120V/460W, w/o plug	100.862
HOT-JET S, 100V/460W, JP plug	100.863
HOT-JET S, 230V/460W, CN plug	138.414
HOT-JET S, 220V/460W, KR plug	140.030

## Nozzles



107.141  
Wide slot nozzle (ø 21.3) 15 x 2 mm



107.142  
Wide slot nozzle (ø 21.3) 20 x 2 mm



105.549  
Wide slot nozzle (ø 21.3) 10 x 2 mm



107.144  
Tubular nozzle (ø 21.3) ø 5 mm, 41 mm



105.556  
Wide slot nozzle (ø 21.3) 20 x 2 mm



106.991  
Speed welding nozzle (ø 8.0) Profile D ø 5

## Spare parts



100.818  
Heating element, 230V/435W



103.607  
Heating element, 120V/435W



103.606  
Heating element, 100V/435W



**Configure  
product**

All accessories can be found from page 22.

# Accessories for Welding Machines

## Nozzles



**176.291**  
Power scraping nozzle, 40 mm, VARIMAT 700/500/300  
VARIMAT 300, VARIMAT 500, VARIMAT 700



**138.048**  
Overlap welding nozzle 75 mm BITUMAT B2  
BITUMAT B2



**138.047**  
Overlap welding nozzle 100 mm BITUMAT B2  
BITUMAT B2



**170.119**  
Inseam scraping nozzle, 40 mm, UNIROOF  
UNIROOF 300, UNIROOF 700



**155.326**  
Overlap welding nozzle 30 mm  
UNIROOF 300, UNIROOF 700



**164.586**  
Overlap welding nozzle 15 mm  
UNIDRIVE 500



**164.576**  
Overlap welding nozzle 30 mm  
UNIDRIVE 500



**170.120**  
Inseam scraping nozzle, 40 mm  
UNIDRIVE 500



**164.403**  
Overlap welding nozzle 40 mm  
UNIDRIVE 500

## Machine specific accessories



**172.967**  
Power cable 5 m (Harting), CEE 5/16  
VARIMAT 500, VARIMAT 700



**172.968**  
Power cable 5 m (Harting), EU plug  
VARIMAT 500, VARIMAT 700



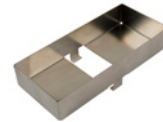
**174.945**  
Power cable 5 m (Harting), w/o plug  
VARIMAT 500, VARIMAT 700



**174.946**  
Power cable 5 m (Harting), CEE 3/16  
VARIMAT 500, VARIMAT 700



**174.960**  
Power cable 3 m (Harting), KR plug  
VARIMAT 500, VARIMAT 700



**134.005**  
Accessories box VARIMAT 700/500/300  
VARIMAT 300, VARIMAT 500, VARIMAT 700



**174.323**  
Force sensor for additional weight detection  
VARIMAT 500, VARIMAT 700



**175.742**  
Plug (Harting) 6 pin/16A  
VARIMAT 500, VARIMAT 700



**171.490**  
Additional weight VARIMAT 700/500/300  
VARIMAT 300, VARIMAT 500, VARIMAT 700



**173.090**  
Nozzle adjustment gauge VARIMAT 700/500/300  
VARIMAT 300, VARIMAT 500, VARIMAT 700



**175.074**  
Rolling Transport Case VARIMAT 700/500/300  
VARIMAT 300, VARIMAT 500, VARIMAT 700

## Machine specific accessories



**119.111**  
**Assembly cone for silicone pressure rollers**  
VARIMAT 300, VARIMAT 500, VARIMAT 700



**143.163**  
**Silicone rubber roller ø 62/81 x 51 mm, 25 Shore A**  
VARIMAT 300, VARIMAT 500, VARIMAT 700



**176.977**  
**Roof structure profil kit, VARIMAT 700/500/300**  
VARIMAT 300, VARIMAT 500, VARIMAT 700



**137.895**  
**Pressure roller 100 mm, with heel**  
BITUMAT B2



**140.229**  
**Pressure roller 100 mm, without heel**  
BITUMAT B2



**140.228**  
**Pressure roller 75 mm, without heel**  
BITUMAT B2



**156.447**  
**Pressure roller 80 mm**  
BITUMAT B2



**158.222**  
**Pressure roller 100 mm**  
BITUMAT B2



**140.476**  
**Lifting device BITUMAT B2**  
BITUMAT B2

## Machine specific accessories



**155.328**  
**Bitumen kit 120 mm, BITUMAT B2**  
BITUMAT B2



**137.896**  
**Pressure roller 75 mm, with heel**  
BITUMAT B2



**140.489**  
**Equipment box**  
BITUMAT B2



**173.295**  
**Roof profile kit, UNIROOF 700/300**  
UNIROOF 300, UNIROOF 700



**137.843**  
**Guide bar top**  
UNIROOF 300, UNIROOF 700



**132.429**  
**Welding plate**  
UNIROOF 300, UNIROOF 700, VARIMAT 300, VARIMAT 500, VARIMAT 700



**173.654**  
**Bitumen kit 80 mm, UNIROOF 700/300**  
UNIROOF 300, UNIROOF 700



**154.522**  
**Transport axis, 300 mm**  
UNIROOF 300, UNIROOF 700



**152.706**  
**Transport axis 210 mm, with movable wheels**  
UNIROOF 300, UNIROOF 700



**167.345**  
**Nozzle adjustment gauge UNIROOF 700/300**  
UNIROOF 300, UNIROOF 700



**176.939**  
**Roof structure profil kit universal UNIROOF 700/300**  
UNIROOF 300, UNIROOF 700

#### Machine specific accessories



**177.022**  
**Overlap welding nozzle 30 mm, UNIROOF**  
**700/300**  
UNIROOF 300, UNIROOF 700



**177.020**  
**Bitumen kit 80 mm complete , UNIROOF 700/300**  
UNIROOF 300, UNIROOF 700



**177.021**  
**Overlap welding nozzle 80 mm, UNIROOF**  
**700/300**  
UNIROOF 300, UNIROOF 700



**152.741**  
**Additional weight lateral**  
UNIROOF 300, UNIROOF 700



**152.742**  
**Additional weight front**  
UNIROOF 300, UNIROOF 700



**154.827**  
**Tool case**  
UNIROOF 300, UNIROOF 700



**155.577**  
**Locking plate for additional weights**  
UNIROOF 300, UNIROOF 700



**108.129**  
**Guide bar top**  
UNIROOF 300, UNIROOF 700



**163.930**  
**Pressure roller 15 mm**  
UNIDRIVE 500



**163.357**  
**Pressure roller 40 mm**  
UNIDRIVE 500



**162.551**  
**Support roller**  
UNIDRIVE 500

#### Machine specific accessories



**169.780**  
**Support roll**  
UNIDRIVE 500



**159.911**  
**Pressure roller hub**  
UNIDRIVE 500



**161.156**  
**Silicone rubber roller ø22/36 x 49 mm, 50 Shore A**  
UNIDRIVE 500



**164.605**  
**Tool case**  
UNIDRIVE 500



**156.531**  
**Carrying strap**  
UNIDRIVE 500



**167.248**  
**Cable clamp complete**  
UNIDRIVE 500





# Accessories for Heat Guns

## Nozzles



**107.123**  
**Wide slot nozzle (ø 31.5) 20 x 2 mm**  
TRIAC AT, TRIAC ST



**107.132**  
**Wide slot nozzle (ø 31.5) 40 x 2 mm**  
TRIAC AT, TRIAC ST



**107.124**  
**Wide slot nozzle (ø 31.5) 20 x 2 mm**  
TRIAC AT, TRIAC ST



**105.503**  
**Wide slot nozzle (ø 31.5) 20 x 2 mm**  
TRIAC AT, TRIAC ST



**105.487**  
**Wide slot nozzle (ø 31.5) 20 x 2 mm**  
TRIAC AT, TRIAC ST



**100.303**  
**Tubular nozzle (ø 31.5) ø 5 mm, 37 mm**  
TRIAC AT, TRIAC ST



**107.131**  
**Wide slot nozzle (ø 31.5) 80 x 2 mm**  
TRIAC AT, TRIAC ST



**107.133**  
**Wide slot nozzle (ø 31.5) 40 x 2 mm**  
TRIAC AT, TRIAC ST



**107.129**  
**Wide slot nozzle (ø 31.5) 60 x 2 mm**  
TRIAC AT, TRIAC ST



**105.475**  
**Wide slot nozzle (ø 31.5) 20 x 2 mm**  
TRIAC AT, TRIAC ST



**105.485**  
**Wide slot nozzle (ø 31.5) 25 x 2 mm**  
TRIAC AT, TRIAC ST

## Nozzles



**105.494**  
**Wide slot nozzle (ø 31.5) 30 x 2 mm**  
TRIAC AT, TRIAC ST



**105.575**  
**Tubular nozzle (ø 31.5) ø 5 mm, 100 mm**  
TRIAC AT, TRIAC ST



**106.982**  
**Tubular nozzle (ø 31.5) ø 5 mm, 150 mm**  
TRIAC AT, TRIAC ST



**105.576**  
**Tubular nozzle (ø 31.5) ø 5 mm, 30 x 60 mm**  
TRIAC AT, TRIAC ST



**107.130**  
**Wide slot nozzle (ø 31.5) 40 x 2 mm**  
TRIAC AT, TRIAC ST



**107.125**  
**Wide slot nozzle (ø 31.5) 20 x 2 mm**  
TRIAC AT, TRIAC ST



**105.503**  
**Wide slot nozzle (ø 31.5) 20 x 2 mm**  
TRIAC AT, TRIAC ST



**107.258**  
**Wide slot nozzle (ø 50.0) 70 x 10 mm**  
ELECTRON ST



**107.653**  
**Wide slot nozzle (ø 50.0) 75 x 2 mm**  
ELECTRON ST



**107.270**  
**Wide slot nozzle (ø 50.0) 150 x 12 mm**  
ELECTRON ST



**142.281**  
**Wide slot nozzle (ø 50.0) 74 x 3 mm**  
ELECTRON ST

## Nozzles



**107.141**  
Wide slot nozzle (ø 21.3) 15 x 2 mm  
HOT JET S



**107.142**  
Wide slot nozzle (ø 21.3) 20 x 2 mm  
HOT JET S



**105.549**  
Wide slot nozzle (ø 21.3) 10 x 2 mm  
HOT JET S



**107.144**  
Tubular nozzle (ø 21.3) ø 5 mm, 41 mm  
HOT JET S



**105.556**  
Wide slot nozzle (ø 21.3) 20 x 2 mm  
HOT JET S



**106.989**  
Speed welding nozzle (ø 8.0) Profile D ø 3  
HOT JET S, TRIAC AT, TRIAC ST



**106.990**  
Speed welding nozzle (ø 8.0) Profile D ø 4  
HOT JET S, TRIAC AT, TRIAC ST



**106.991**  
Speed welding nozzle (ø 8.0) Profile D ø 5  
HOT JET S, TRIAC AT, TRIAC ST

## Machine specific accessories



**116.586**  
Tool case  
ELECTRON ST, TRIAC AT, TRIAC ST



**107.348**  
Storage stand  
ELECTRON ST, HOT JET S, TRIAC AT, TRIAC ST



**169.010**  
Soldering iron kit, cylinder and tip shape  
TRIAC AT



**176.537**  
Soldering iron kit, tip and chisel shape  
TRIAC AT



**169.168**  
Copper iron tempered, for tip shape soldering  
TRIAC AT



**169.169**  
Copper iron tempered, for customized soldering  
TRIAC AT



**169.887**  
Copper iron tempered, for chisel shape soldering  
TRIAC AT



**169.176**  
Stand for soldering iron kit, TRIAC AT  
TRIAC AT



**169.011**  
Soldering iron adapter for TRIAC AT  
TRIAC AT



**151.068**  
Stand ELECTRON ST  
ELECTRON ST

# More Accessories

## General accessories



140.160  
Pressure roller 40 mm, silicone



140.161  
Pressure roller 28 mm, silicone



106.976  
Pressure roller 28 mm, PTFE



175.657  
Pressure roller 8 mm, PTFE



175.658  
Pressure roller 8 mm, PTFE



106.972  
Pressure roller 6 mm, brass



106.974  
Pressure roller 80 mm, silicone



151.382  
Kehlfix for plastic liners



153.009  
Plastfix



151.188  
Edge planer for T-joints



125.917  
Blade sharpener

## General accessories



172.482  
Seam weld tester



174.048  
Seam weld tester



172.483  
Seam weld tester multitool



138.817  
Wire brush, stainless steel



129.656  
Wire brush, stainless steel



116.798  
Wire brush, brass



151.847  
Cylinder brush, brass ø 15 mm



100.530  
Allen wrench 4 mm



150.715  
Screwdriver, Torx T20



157.544  
Utility scissors, 260 mm / 10.2 in



137.855  
Utility Knife

## General accessories



138.902  
Hook blade



138.539  
Trapezoid blade



160.353  
Cable reel 25 m (PUR), 5 x 2.5 mm<sup>2</sup>, CEE 400V/16A;  
2xEU 3/16, 1xCEE 5/16



117.777  
Extension cable 15 m (PUR), 3 x 2.5 mm<sup>2</sup>, T23 (IP55)



169.190  
Cable reel 45 m (PUR), 3 x 2.5 mm<sup>2</sup>, T23 (IP55)  
230V/16A; 4xT23 (IP55)



161.207  
Cable reel 25 m (PUR), 5 x 2.5 mm<sup>2</sup>, CEE 400V/16A;  
2xFR,BE,CZ,PL Type E, 1xCEE 5/16



164.048  
Cable roll 45 m (PUR), 3 x 2.5 mm<sup>2</sup>, EU 230V/16A;  
4xEU 3/16



160.015  
Extension cable 15 m (PUR), 5 x 2.5mm<sup>2</sup>, CEE  
400V/16A



159.239  
Extension cable 15 m (PUR), 3 x 2.5 mm<sup>2</sup>, EU  
230V/16A

## Testing equipment



139.059  
EXAMO 300F USB, 230V/200W, EU plug



139.060  
EXAMO 600F USB, 230V/200W, EU plug



134.832  
Test and calibration kit for EXAMO



144.416  
USB memory stick, 16 GB



136.961  
Temperature measuring device G1200



136.963  
Insertion probe type K, ø 1.5 × 100 mm



142.570  
Tool case



159.514  
Welding seam test template





## Legal Notices

### Contents

We endeavor to ensure all information is correct, up-to-date and complete while carefully preparing the contents of this brochure. We cannot assume any liability for the information offered. We reserve the right to change or update all information provided at any time without further notice.

### Copyright/Industrial Property Rights

Texts, images, graphics and their arrangement are subject to copyright protection and other protective laws. The reproduction, modification, transfer or publication of part or all of the contents of this brochure is prohibited in any form, except for private, non-commercial purposes.

All marks contained in this brochure (protected trademarks, such as logos and business names) are the property of Leister AG, Leister Brands AG or third parties and may not be used, copied or distributed without prior written consent.

### Modifications

Modifications can be made at any time.

© Leister AG  
Galileo-Strasse 10  
6056 Kaegiswil  
Switzerland

+41 41 662 74 74  
leister@leister.com  
leister.com



**Sign up now  
for the newsletter**



# Leister

Leister Technologies AG is an ISO 9001 certified enterprise.