

HOT JET 500 A/302 A

Operating Instructions



Table of Contents

1. Application	4
1.1 Intended use	4
1.2 Non-intended use	4
1.3 General safety information	5
2. Functions	6
3. Technical data	7
4. Transport	8
5. Your HOT JET	9
5.1 Type plate and identification	9
5.2 Overview of device parts	10
5.3 Control (e-Drive)	10
5.4 Display display	11
5.5 Display Symbole	11
6. Operation HOT JET	12
6.1 Power supply	12
6.2 Connect the device to the network voltage.	12
6.3 Switch on the device (operation)	12
6.4 Switch off the device	14
6.5 Disconnect device from mains power	15
7. Setup	16
7.1 Calling up the setup	16
7.2 Navigation in the setup	16
7.3 Setup menu items	16
7.4 Exiting the Menu	24
7.5 Reset to basic configuration	24
8. Faults and Error Codes	25
9. Quick guide HOT JET A	26
9.1 Switching on/Starting	26
9.2 Switching off	26
10. Accessories	27
11. Service and repair	27
11.1 Replacement of heating element [A1] and mica tube [A2]	27

12. Training	28
13. Other applicable documents	28
14. Declaration of Conformity	28
15. Disposal	28

We congratulate you on purchasing your HOT JET.

You have chosen a first-class hot air device.

It was developed and produced in accordance with the latest technology in the plastics-processing industry. It has also been manufactured using high-quality materials.



Please read the instruction manual before use.

HOT JET 500 A, HOT JET 302 A

Hot Air Tool



More information about the HOT JET can be found at leister.com

1. Application

1.1 Intended use

The hand-held hot air devices HOT JET are designed for professional use in the commercial sector, for shrinking, shaping, welding thermoplastic plastics as well as for soldering and desoldering electrical and electronic SMD and THT components.

The legal provisions on health protection applicable in the respective country must be observed. Never use the hot air device in an explosive or flammable environment and always keep a safe distance from flammable materials or explosive gases. Read the material safety data sheet from the manufacturer of the material and follow that company's instructions. Be careful not to burn the material during the welding process. Observe general safety instructions [1.3].

1.2 Non-intended use

Any other use or any use beyond the type of use described is deemed non-intended use.

1.3 General safety information

Please observe the safety instructions provided in the individual chapters of these operating instructions as well as the following safety instructions.

Warning



Risk of death from electric shock – Protect yourself from electric shock.

- Caution when welding in electrically conductive environments (dust and fibers).
- Protect the device from moisture and wet conditions.
- When used on a construction site, a residual current circuit breaker is mandatory.
- Before using the device, check the power cord, plug, and extension cord for electrical and mechanical damage and their suitability for the operating environment.
- The device must only be opened by trained professionals, with the exception of the heating element replacement described in the operating instructions.
- When opening the device there is a risk of danger to life because live parts are being exposed. Pull the power plug from the outlet before opening the device.



Fire and Explosion Hazard – Be aware of the hazard when used improperly in the presence of flammable materials and/or explosive gases.

- Do not point the hot air jet at the same location for a long time. Heat may be introduced to flammable materials out of sight.



Health risk – Protect yourself from harmful fumes.

- When welding with incorrect materials or when welding at too high a temperature, a risk of harmful gases/vapors can arise.
- Avoid inhaling fumes, especially when working with PVC materials.
- Follow the material manufacturer's specification.
- Always ensure good ventilation of the workplace when working.



Risk of burns – Be aware of the risk of hot parts or hot air jet

- Do not touch the heating element tube and nozzle when hot.
- Place the device on a stand and let it cool completely before changing the nozzle or storing the device after use.
- Allow the appliance to cool down completely before turning it off.
- Never point the hot air flow at people or animals.



Life-threatening due to improperly repaired devices

- Let **repairs** be carried out exclusively by an authorised service centre, with the exception of the heating element replacement described in the operating instructions.
- Use only **original accessories** and **spare parts**.



Risk of tripping when the mains cable is placed carelessly.

- Be aware that there is a risk of tripping if the power cord is placed carelessly.
- Ensure that the power cord is free to move and does not obstruct the users or third parties while working.



Automatic restart when protection is deactivated

- The device is configured in such a way that it restarts automatically when switched on after a mains interruption once the supply voltage returns. For this, the device sets itself to the temperature / air volume last set.

Caution



- Operate the device **exclusively under supervision**, as the waste heat generated can ignite flammable materials.
- The device should only be operated by **trained specialists** or under their supervision.
- Children are not permitted to operate the device.



- Note that the information displayed on the device **Rated voltage** with the **Network voltage** must be agreed upon on site.

2. Functions

Operating option	The device is operated by the e-Drive, all manipulations can be carried out via this	[7.2]
Temperature	Regulated temperature in 5 °C/10 °F increments Cold Step (Heating Off, OFF)	[6.3.1]
Airflow	Selection of nine stages	[6.3.2]
Workspace Restriction	Range can be defined for temperature and air volume. This helps prevent errors in the application.	[7.3.3.1]
Voltage monitoring	Under- or overvoltage warning	[6.3.3]
Eco-Mode	Automatic power reduction when not in use (energy-saving function)	[7.3.1]
Restart protection	Restart protection in case of mains voltage interruption	[7.3.3]
Formulas	Option to predefine temperature and air combination settings	[7.3.2]

3. Technical data


		HOT JET 500 A	HOT JET 500 A	HOT JET 500 A	HOT JET 302 A	HOT JET 302 A	HOT JET 302 A
Voltage	V	100	120	230	100	120	230
Frequency	Hz	50/60					
Power	W	1050	1050	1050	500	600	600
Temperature	°C °F	OFF, 60 - 550 OFF, 140 - 1022					
Temperature setting changeable		Yes					
airflow	%	20 - 100 (9 levels)					
Air volume setting changeable		Yes					
Static pressure	Pa	2200	2200	2200	2000	2000	2000
Eco-Mode		Yes					
Display		Yes					
e-Drive		Yes					
Outdoor use		Yes					
Noise level	dB (A)	67 (K = 3)					
Vibration value	m/s ²	2.5 (K = 1.5)					
Nozzle connection ø	mm in	31.5 1.2	31.5 1.2	31.5 1.2	21.3 0.84	21.3 0.84	21.3 0.84
Length	mm in	277 10.9					
Device diameter	mm in	68 2.7					
Handle diameter	mm in	45 1.8					
Weight	kg lbs	0.59	0.59	0.59	0.53	0.53	0.53
Approvals, protection class		CE					
Country of origin		Switzerland					

We reserve the right to make technical changes.

4. Transport



Fire hazard when transporting while hot

- Allow the hot air device to cool down sufficiently before transportation (see  Cool-Down Mode [6.4.1]).
- Never store flammable materials (such as plastic or wood) in the transport box.



- During transportation, store and secure the device in such a way that it is not exposed to mechanical damage.

5. Your HOT JET

5.1 Type plate and identification

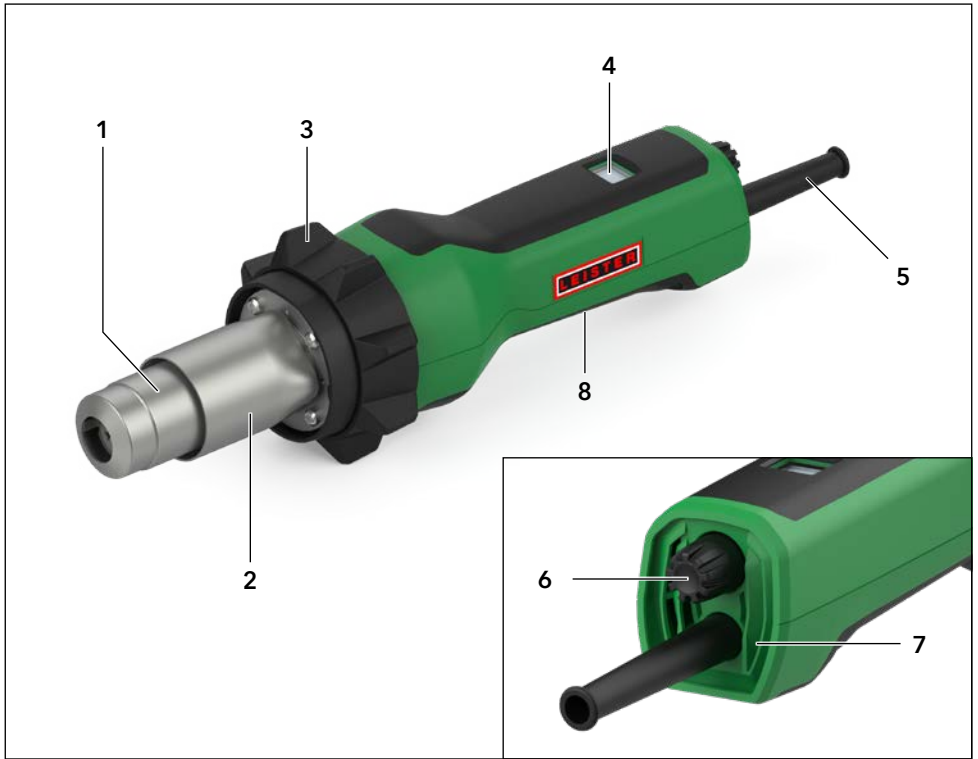
The model and serial number are indicated on your device's **name plate (8)**. Transfer this information to your user manual and always refer to this information when enquiring with our country company or your authorized Leister sales and service partner.

Model:
Serial no.:

Example:

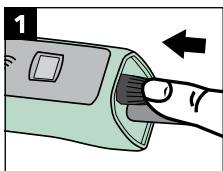


5.2 Overview of device parts

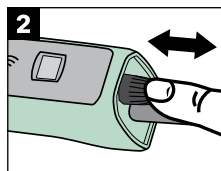


- | | |
|---|----------------------|
| 1. Heating tube | 5. Power cord |
| 2. protective tube | 6. Control (e-Drive) |
| 3. Non-slip base for improved stability | 7. Air inlet |
| 4. Display | 8. Type plate |

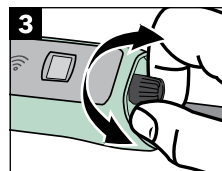
5.3 Control (e-Drive)



long press (>2 sec)

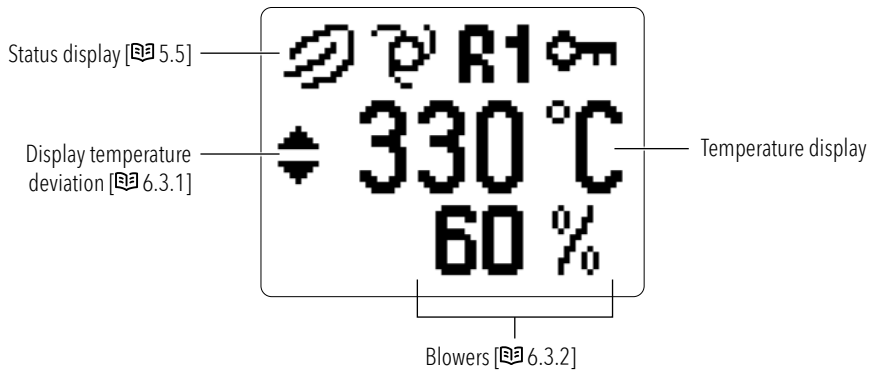


short press (1 ×)



rotate

5.4 Display display



5.5 Display Symbole

Status display

Symbol	Meaning
	Undervoltage The mains voltage to which the device is connected is too low.
	Overvoltage The mains voltage to which the device is connected is too high.

Configuration display

Symbol	Meaning
	Application protection The workspace has been restricted. [↗ 7.3.3.1]
	Eco-Mode Eco mode is active [↗ 7.3.1]
	Automatic restart! The device starts automatically as soon as it is connected to mains voltage. [↗ 7.3.3]
	Key lock Input with the e-Drive has been blocked. [↗ 6.3.4]
R1	Formulas A recipe is active, R1, R2 or R3. [↗ 7.3.2]


If the basic configuration has been changed, the respective icon in the status bar (see ↗ 5.4) displayed. To reset the device to its basic configuration, a "factory reset" can be performed (see ↗ 7.5).

6. Operation HOT JET

6.1 Power supply

Power cord and extension cable



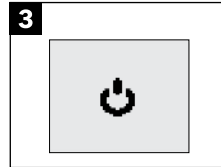
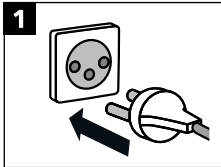
- The one indicated on the device **Rated voltage** (see  Technical data [3]) must be included with the **Network voltage** match.
- The **power supply cable (5)** must be freely movable and must not obstruct users or third parties at work (risk of tripping).
- The extension cables must be authorized for the utilization site (e.g., outdoors) and be marked accordingly. Take the necessary minimum cross-section for extension cables into account as required.

On-site generators for power supply

When using generators for power supply, ensure that the generators are grounded and equipped with an RCD.

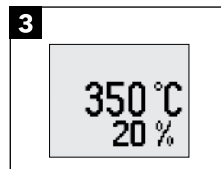
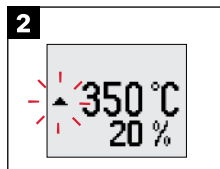
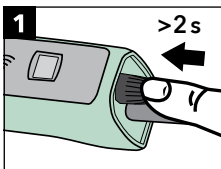
The rated power of generators is given by the formula "1.5-2 × rated power of the hot air device".

6.2 Connect the device to the network voltage.



6.3 Switch on the device (operation)

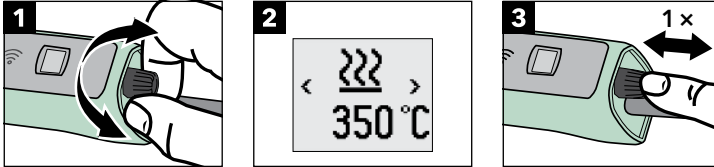
- Turn on the hot air device by pressing and holding the **e-Drive (6)**.
- The unit heats up to the last set value. When no temperature deviation is displayed (flashing arrow), the device is ready for use.



ready to use

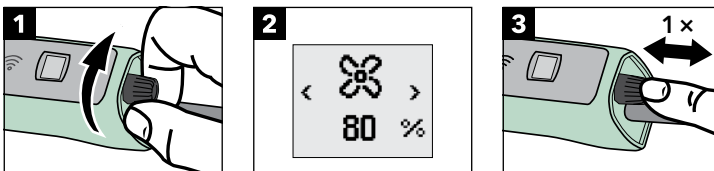
6.3.1 Set temperature

- Turn the **e-Drive (6)** until the temperature symbol.
- Press the **e-Drive (6)** to select the temperature.
- Turn the **e-Drive (6)** to set the desired setpoint value.
- If no further input is made, this input mode will be automatically exited after four seconds. Alternatively, you can press the **e-Drive (6)** briefly to exit the input mode directly.
- If no temperature deviation is displayed anymore (blinking arrow), the device is ready for use.



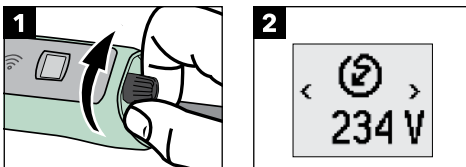
6.3.2 Adjust air volume

- Turn the **e-Drive (6)** until the fan symbol.
- Press the **e-Drive (6)** to select the air volume.
- Turn the **e-Drive (6)** to set the desired value.
- If no further input is made, this input mode will be automatically exited after four seconds. Alternatively, you can press the **e-Drive (6)** briefly to exit the input mode directly.



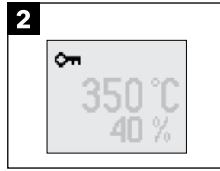
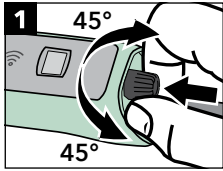
6.3.3 Display of mains voltage

- Turn the **e-Drive (6)** until the voltage symbol and the mains voltage are displayed.
- The displayed voltage is calculated and may differ from the actual mains voltage value.

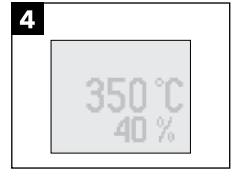
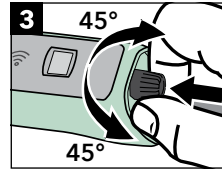


6.3.4 Lock/unlock operating lock (e-Drive)

- Press the **e-Drive (6)**.
- Turn the **e-Drive (6)**, while holding it down, at least 45° clockwise and 45° counterclockwise.
- If the key icon is displayed, the device's operation is locked.



locked

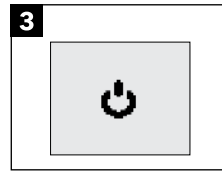
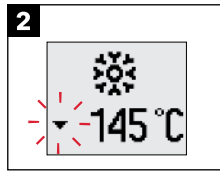
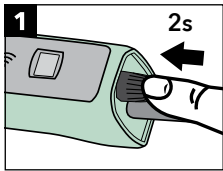


Unlock

6.4 Switch off the device

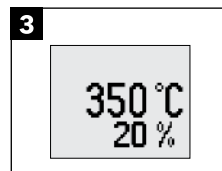
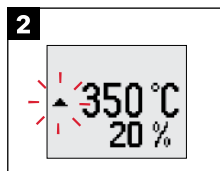
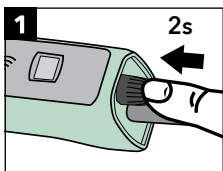
6.4.1 Switch off device with cool down function

- Press the **e-Drive (6)**, until the snowflake icon appears and the cooling function starts.
- The actual temperature decreasing is shown.
- The device switches off automatically when the temperature of the device is close to the ambient temperature.



6.4.2 Cancel shutdown (back to operation)

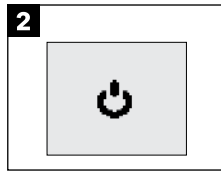
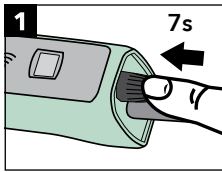
- Press the **e-Drive (6)** long during the cooling process to put the device back into operation.



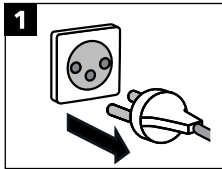
ready to use

6.4.3 Force shutdown (goes directly to standby)

- Press the **e-Drive (6)** in working mode for a very long time until the device switches to standby mode.
- Caution, the device may still be very hot.



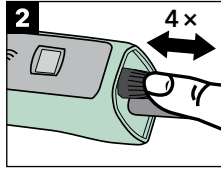
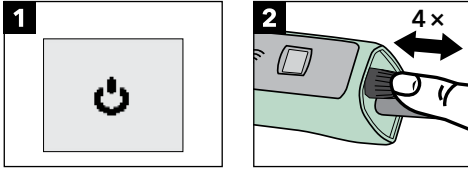
6.5 Disconnect device from mains power



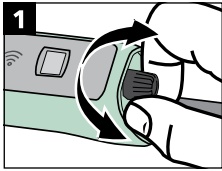
7. Setup

7.1 Calling up the setup

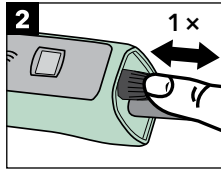
- Press the **e-Drive (6)** four times in standby mode to access the setup menu.



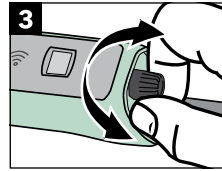
7.2 Navigation in the setup



Change Parameters



Select/confirm parameters



Change Parameters

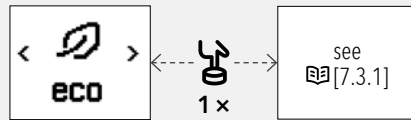
In each submenu, there is the option to either go back one level  or directly back into standby or work  to jump.

7.3 Setup menu items

Eco-Mode

Settings to save energy when the device is running but not in use.

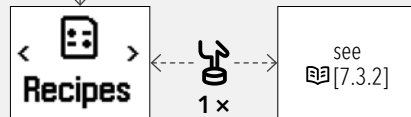
- ON / OFF
- Eco-Mode Timer
- Cooldown Timer



Formulas

Temperature and air combinations can be predefined

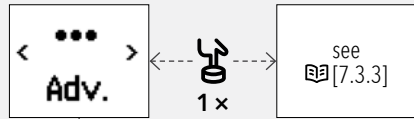
- List of recipes
- Define/edit recipes



Advanced Menu

Here you can find the advanced settings of the device. These settings can be password protected to prevent unauthorized tampering.

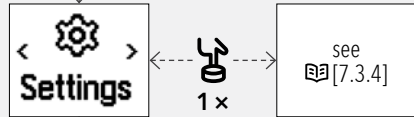
- Application protection
- Application protection lock
- Automatic restart
- Advanced menü lock
- Advanced reset



Settings

Basic settings of the device

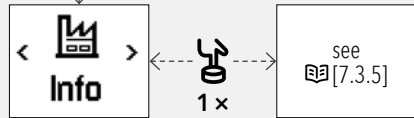
- Temperature unit
- Operating data
- Screen brightness
- Factory reset



Info

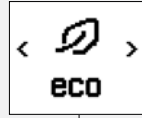
Device information

- HMI-Firmware
- Blower Firmware



7.3.1 Define Eco-Mode

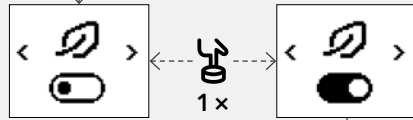
To save energy, the power consumption is reduced during work breaks. When work resumes, the device is ready for use again in a very short time. If the device is not used for a longer period, it will automatically cool down and switch off.



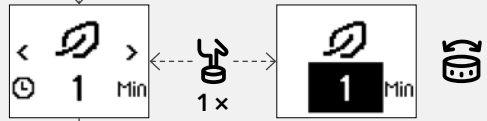
Eco-Mode

OFF (Standard)

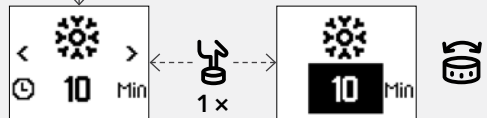
ON



Rest period until performance reduction
1 min → 60 min in 1-minute increments



Soak time in Eco mode, until the device cools down and switches off automatically
10 min → 120 min in 1-minute increments



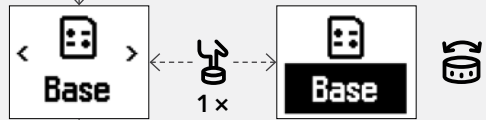
7.3.2 Formulas

Option to define and select temperature and air combination.



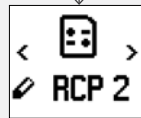
Recipe select, the one to be used comes

- Base (predefined)
- Recipe 1
- Recipe 2
- Recipe 3



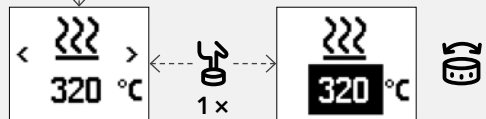
Edit recipes

Select the recipe to be modified.



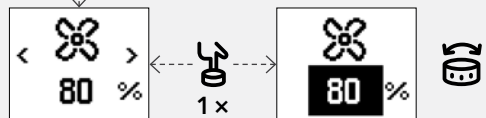
Set **temperature**

60°C to 550°C in 5°C increments



Adjust **air volume**

20% to 100% in 10% increments



7.3.3 Advanced Menü

These settings can be password-protected to prevent unauthorized tampering.

Password: 60602



Application protection

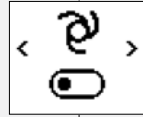
Restricting the adjustable operating range (air and temperature range), see [7.3.3.1](#)



Automatic restart

OFF = Device goes into standby after mains voltage is applied (restart protection).

ON = Device goes into the mode it was in before the power outage (Work or Standby) after mains voltage is applied.



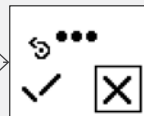
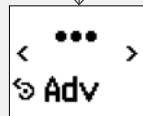
Application Protection Lock

OFF = No password

ON = Submenu Advanced Menü is password protected



Advanced Reset resets all settings in the Advanced menu to factory settings.



7.3.3.1 Application protection

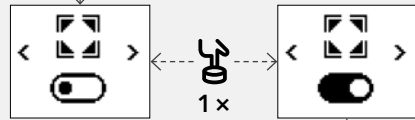
The air and temperature range that can be set during operation can be defined or restricted. Values outside this range are blocked during operation (display of input lock when attempting to leave the authorized range).



Application Protection ON/OFF

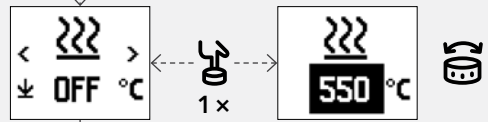
OFF = Workspace restrictions lifted

ON = Workspace restrictions active



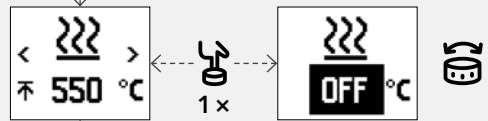
Lowest adjustable temperature

OFF to 550°C



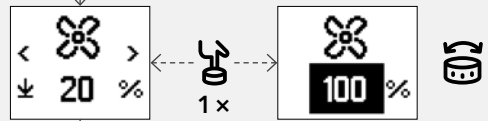
Highest adjustable temperature

OFF to 550°C



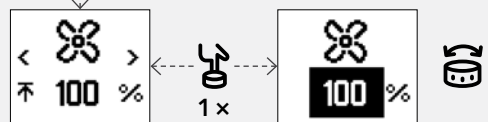
Lowest adjustable blower speed

20% to 100%



Highest adjustable blower level

20% to 100%



7.3.4 Settings

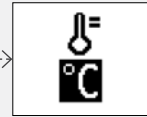
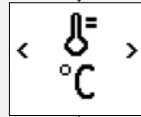
General device settings and device information



Temperature unit

°C = Celsius

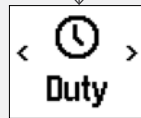
°F = Fahrenheit



Operating data

View operating hours of the device and individual components

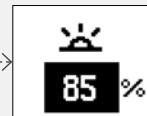
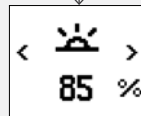
- Operating hours of the device (connected to the mains)
- Operating hours of the heating element (resettable)
- Blower operating hours



Backlight

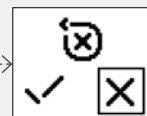
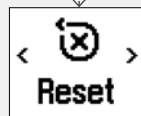
Basic setting 85%

10% to 100% in 1% increments

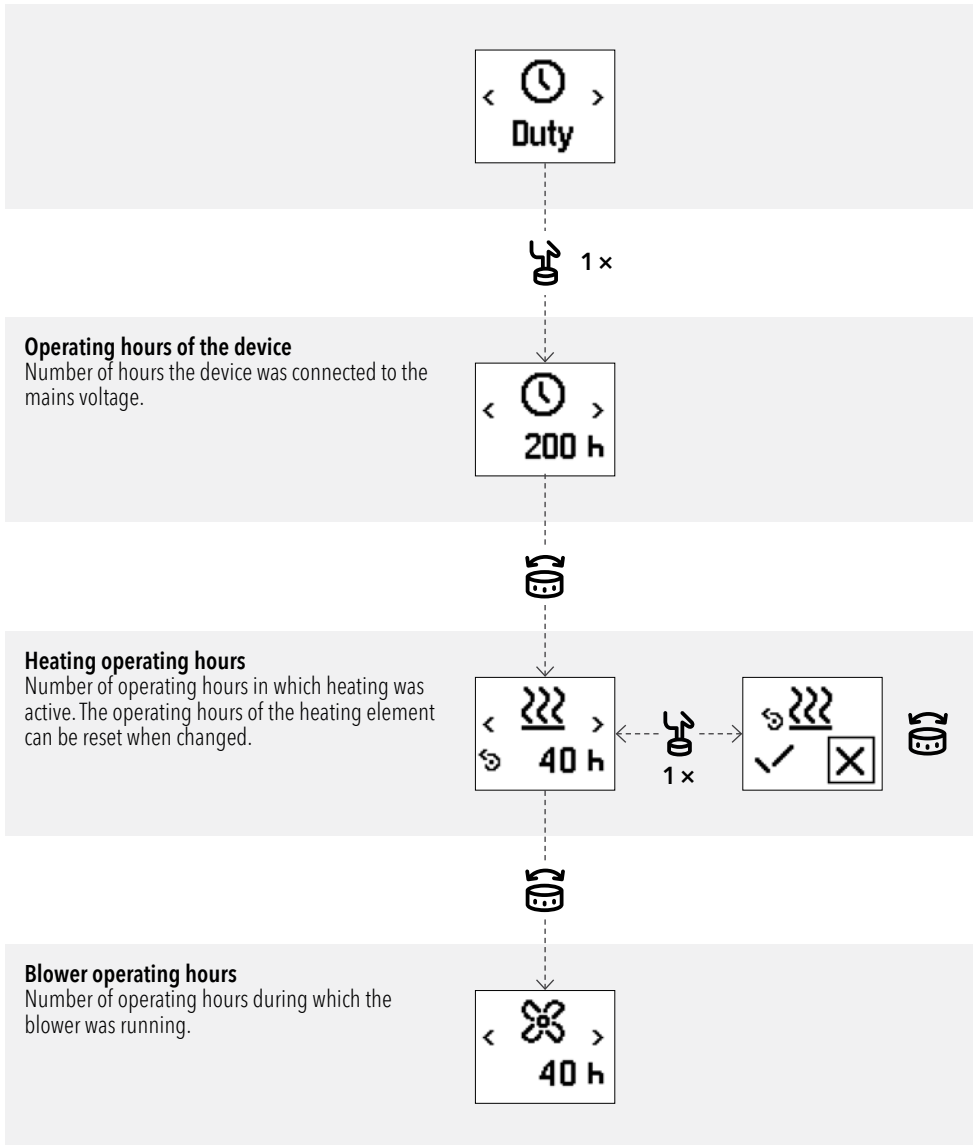


Factory settings

Reset device to factory settings

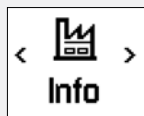


7.3.4.1 Operating data

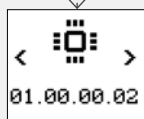


7.3.5 Info

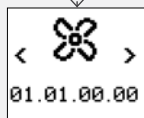
Display the current software versions of the device




HMI Software Version



Blower Software Version



7.4 Exiting the Menu

The setup menu can be exited directly from any submenu by going to the home icon  switched and the **e-Drive (6)** is pressed.

7.5 Reset to basic configuration

Call the setup menu item factory settings  (see  7.3.4) to reset the device to the basic configuration.

8. Faults and Error Codes

Generally, an error with the corresponding error number is displayed in the **Display (4)** displayed. Disconnect the device from the mains after a fault occurs (see [Fig 6.5](#)) and follow the fault list.

Error number	Description	Measures
0x00010001	Ambient temperature too high	Disconnect the power plug and let the device cool down → Restart the device, if the problem persists, contact the responsible Leister service center
0x00200001	Heating element	Disconnect the power plug and let the device cool down → Restart, if the problem persists, replace the heating element (see Fig 11.1) or contact the authorized Leister service center
0x00000000	Hardware	Disconnect the power plug and let the device cool down → Restart the device, if the problem persists, contact the responsible Leister service center

9. Quick guide HOT JET A




Observe the safety instructions and warnings in the individual sections of these operating instructions.

9.1 Switching on/Starting


1. Connect the plug to the mains voltage.
2. Press the **e-Drive (6)** long to turn on the device.
3. Wait until the target temperature is reached.
4. Turn the **e-Drive (6)** to enter the setup menu and adjust air and/or temperature settings.
5. Press the **e-Drive (6)** to select the desired parameter.
6. Turn the **e-Drive (6)** to change the value of the selected parameter.

9.2 Switching off

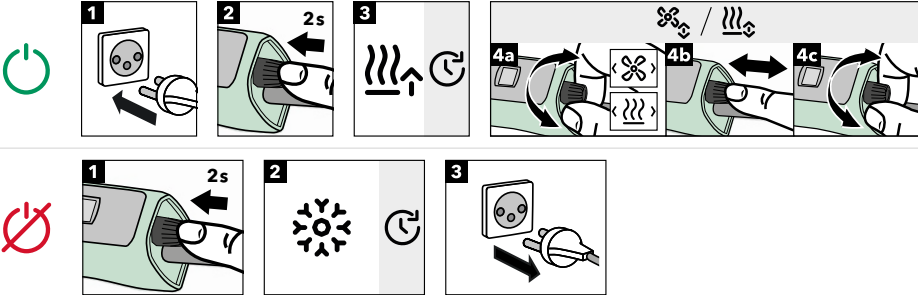
1. Press the **e-Drive (6)** long to start the cooling process.
2. The device will automatically turn off once the cooling process is complete.
3. Unplug the **power cord**.




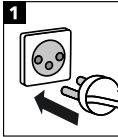
HOT JET A Quick Guide

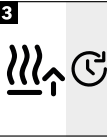


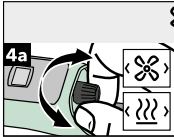
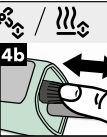
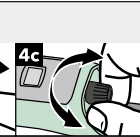
Operating Instructions:
leister.link/qg-hot-jet-a




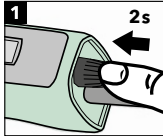
1 

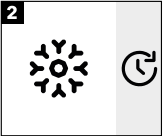
2  2s

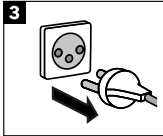
3 

4a  4b  4c 

1 

2  2s

3 

3 

QG HOT JET A / 11.2025 / 144.698

10. Accessories

For more information please visit leister.com.

11. Service and repair

Keep the unit/electric tool and vents clean to work well and safely.

Repairs should only be carried out by authorized Leister sales and service partners, except for the following instructions regarding the replacement of heating element and mica tube, which must be carried out by a trained professional. You can find the address of your authorized Leister sales and service partner on the last page of this manual.

For more information please visit leister.com.

For safe replacement of the heating element [A1] and mica tube [A2], follow these instructions:

11.1 Replacement of heating element [A1] and mica tube [A2]



Danger to life

- Unplug the device from the outlet before opening it, as live components and connections will be exposed.



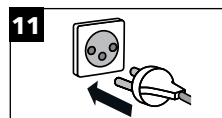
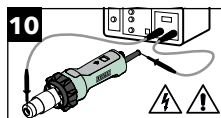
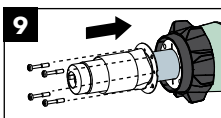
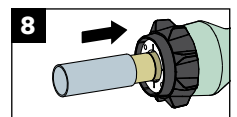
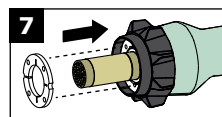
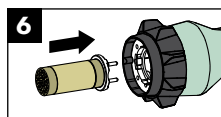
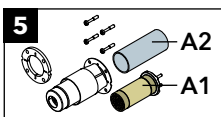
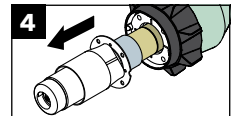
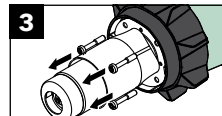
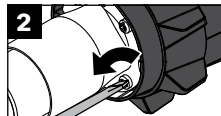
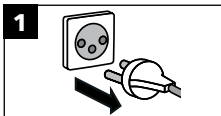
Risk of burning

- Let the device cool down before opening.



Life-threatening situation due to improper replacement of heating element [A1] and mica tube [A2]

- The replacement of heating element [A1] and mica tube [A2] is exclusively carried out by a **electrician** to carry out.
- Use only **original accessories and spare parts**.
- Make sure that the **micatube [A2] has been re-installed in perfect condition**, see step [8]. If necessary, the mica tube [A2] must be replaced.
- After each replacement of heating element [A1] and mica tube [A2], a **high voltage test [10]** must be carried out.



12. Training

The Leister Academy and its authorized Leister sales and service partners offer welding courses and product and service application training.

For more information please visit leister.com.

13. Other applicable documents

Hand Tools – Safety Instructions (Item number: 129.099)

14. Declaration of Conformity

The declaration of conformity can be found on the website at leister.link/doc-hot-jet-a



15. Disposal



Do not dispose of electrical equipment with household refuse.

Electrical appliances, accessories and packaging should be recycled in an environmentally friendly manner. When you are disposing of our products, please observe the national and local regulations.



Warranty

- The guarantee or warranty rights granted for this device by the direct distribution partner/salesperson apply from the date of purchase. In the event of a guarantee or warranty claim (verification by invoice or delivery note), manufacturing or processing errors will be rectified by the sales partner through replacement delivery or repair. Heating elements are excluded from warranty obligations or guarantees.
- Other guarantee or warranty claims are excluded within the framework of mandatory law.
- Damage resulting from natural wear, overload, or improper handling is excluded from the warranty.
- Devices that have been converted or modified by the purchaser are not covered by any warranty or guarantee.
- Only use original Leister spare parts and accessories; otherwise, any warranty or guarantee claims will be invalidated.
- In addition to your statutory warranty, Leister offers an extended warranty of up to 5 years from the date of purchase on Leister branded products (equipment and machinery) purchased through authorized dealers. To do this, register your product online within 30 days of the purchase date under leister.link/warranty.



Find a nearby dealer



Leister Technologies AG

Galileo-Strasse 10
6056 Kaegiswil
Switzerland

+41 41 662 74 74
leister@leister.com

leister.com

